



## CHARTER OAK LANE SANITARY SEWER/STORM WATER UNDER-DRAIN REPLACEMENT PROJECT

### PROJECT OVERVIEW

The Evesham Municipal Utilities Authority (EMUA) will replace existing 50 year-old sanitary sewer mains on Charter Oak Lane as part of its Capital Improvement Program. The Charter Oak Lane sanitary sewer infrastructure has experienced deterioration from both age and exposure to the soil conditions surrounding the sewer mains. A contract was awarded to Montana Construction Corporation in the amount of \$470,209.32 for this project. As part of the EMUA's continued shared services agreement with the Township of Evesham, the storm water under-drain system will be replaced and the entire length of Charter Oak Lane will be resurfaced.

### SCOPE OF WORK

- Installation of approximately 2,273 linear feet of new 8-inch sanitary sewer main
- Installation of approximately 2,273 linear feet of new 6-inch under-drain line
- Installation of new 6-inch PVC sewer laterals from sanitary main to new sanitary sewer cleanout
- Rehabilitation of manholes
- Resurfacing of public roads
- Replacement of concrete curbs, driveway aprons and sidewalk due to public safety or change in grade only.

### SCHEDULE

The estimated start and completion dates, as indicated below, are based on a preliminary construction schedule and are subject to change.

- Estimated start date: August 18<sup>th</sup>, 2011
- Estimated completion date: April 30, 2012
- Normal work hours: 7:00 – 3:30
- Contractor may work at night or weekends, dependent upon needed tie-in work or inclement weather

### IMPORTANT INFORMATION

- Service interruptions will be kept to a minimum.
- EMUA will work to ensure minimal disruption during construction and will restore all work sites to their original condition.
- Noise and dust levels will be closely monitored.

## **TRAFFIC PLANS**

At this time it is anticipated that Charter Oak Lane will be open to local traffic only. Shifts in traffic pattern due to construction activities can be expected. On-street parking restrictions may be necessary. Access to individual driveways may be limited when construction activities are in direct conflict. Construction supervisors and inspectors will be available on-site and can make special arrangements for residents that require assistance.

## **FOR MORE INFORMATION, PLEASE CONTACT**

Sanitary Sewer Replacement:

EMUA Operations Manager: Robert Lender (856) 983-0331 x 202

EMUA Project Coordinator: Jeffrey Maccarella (856) 983-0331 x218

EMUA 24-hour Emergency: (856) 983-1878

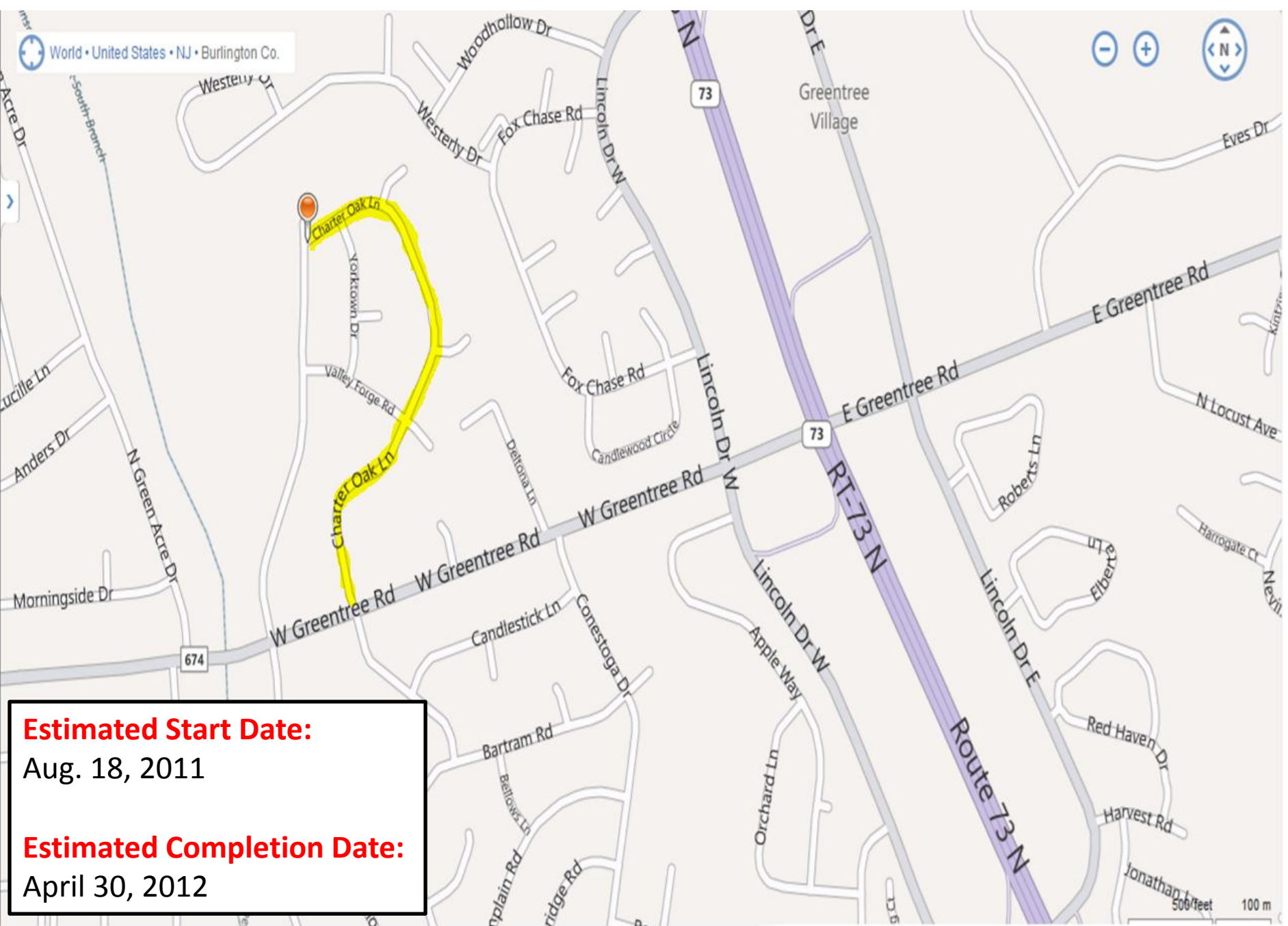
Email: [lenderb@evesham-nj.gov](mailto:lenderb@evesham-nj.gov) / [maccarellaj@evesham-nj.gov](mailto:maccarellaj@evesham-nj.gov)

Website: [www.eveshammua.com](http://www.eveshammua.com) / [www.twp.evesham.nj.us](http://www.twp.evesham.nj.us)

Roadway Resurfacing:

Township Engineer: Timothy Staszewski (856) 216-1890

Public Works Department: (856) 983-2798



**Estimated Start Date:**

Aug. 18, 2011

**Estimated Completion Date:**

April 30, 2012